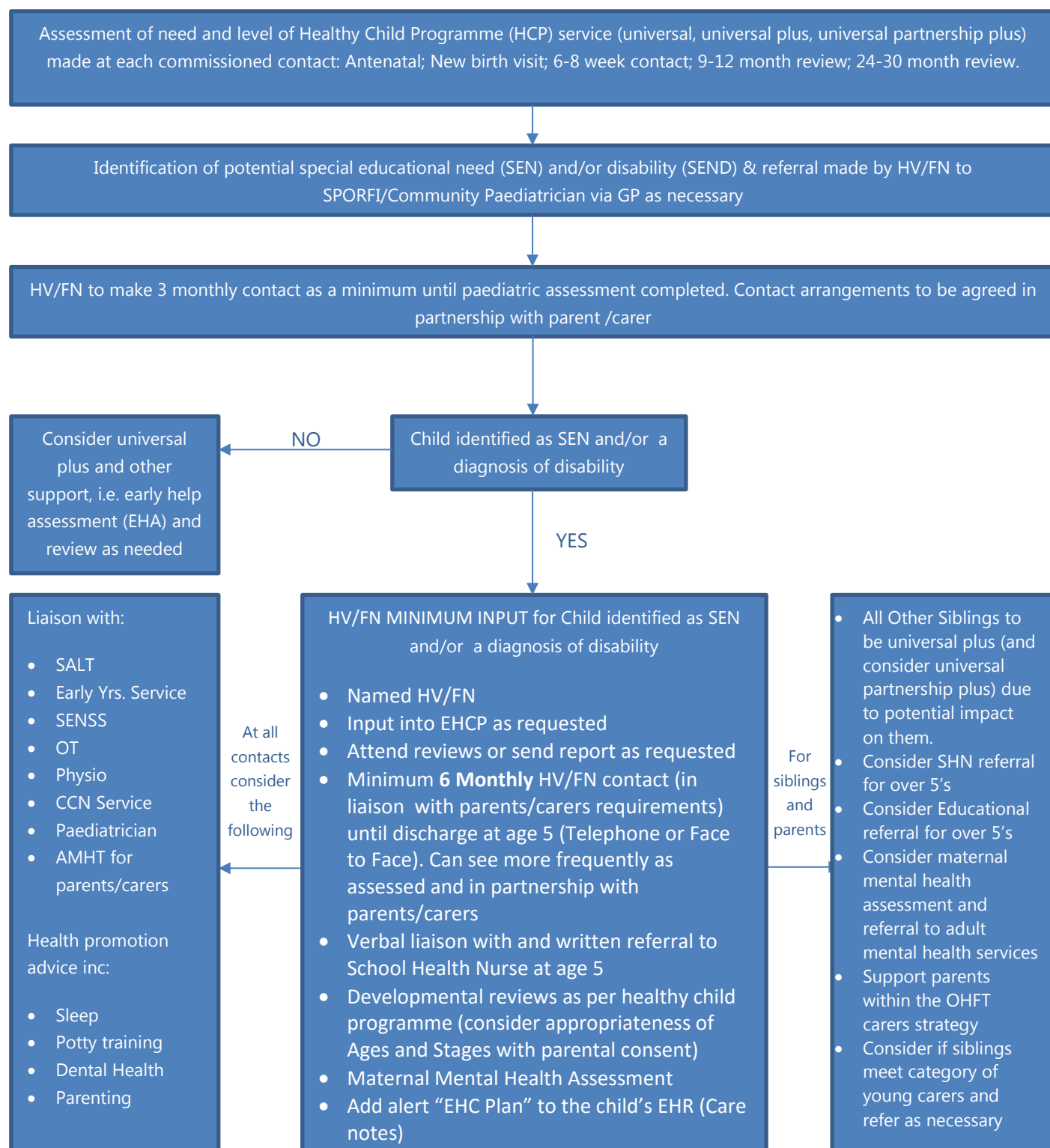


Oxford Health NHS Foundation Trust Special Educational Needs and Disability (SEND) pathway for 0-5 years Public Health Service (Health Visiting and Family Nurse Partnership)



****If, after the completion of their 24-30 month review, a child is identified as special educational needs and/or diagnosed with a disability, the health visitor input will depend on other agencies making the HV team aware***