

GP Triage in Oxfordshire update

Oxfordshire Clinical Commissioning Group

Ross Cornett

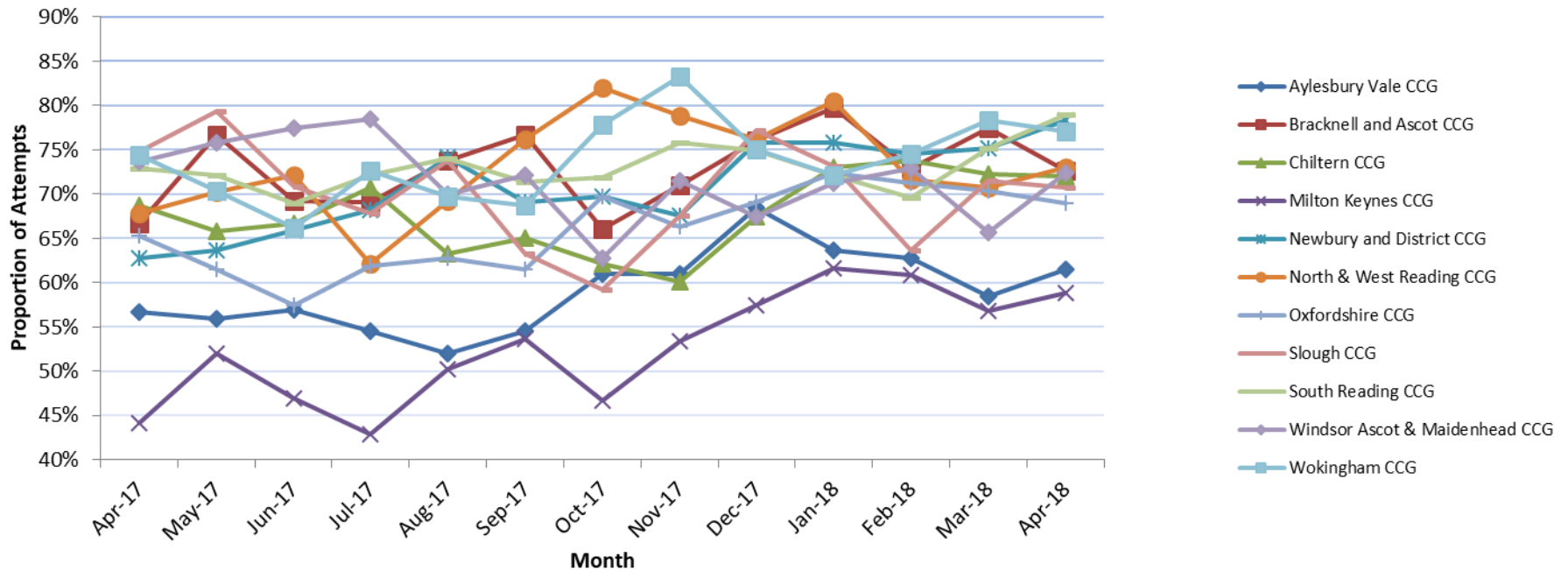


GP triage Background

What is GP triage?

GP triage is the process by which an ambulance clinician passes the care of a patient they are attending, to a general practitioner to enable the patient to stay at home, rather than be conveyed to an emergency department.

SCAS GP triage - proportion of GP triage attempts which were accepted, TV/MK



SCAS GP triage - number of incidents where GP triage was attempted, TV/MK

CCG	Apr-17	May-17	Jun-17	Jul-17	Aug-17	Sep-17	Oct-17	Nov-17	Dec-17	Jan-18	Feb-18	Mar-18	Apr-18
Aylesbury Vale CCG	134	152	123	134	146	121	146	164	219	190	164	159	161
Bracknell and Ascot CCG	123	142	133	149	122	142	153	155	188	198	177	182	161
Chiltern CCG	246	295	285	270	264	249	259	301	320	360	324	303	318
Milton Keynes CCG	172	175	177	198	169	181	210	219	235	227	189	227	192
Newbury and District CCG	156	157	141	157	170	162	165	185	211	161	149	177	152
North & West Reading CCG	115	94	97	132	120	126	117	132	172	154	141	116	115
Oxfordshire CCG	661	731	690	738	702	678	713	740	859	876	805	848	692
Slough CCG	99	145	110	140	99	90	98	105	127	153	124	109	130
South Reading CCG	144	172	142	158	166	150	139	161	187	187	171	209	157
Windsor Ascot & Maidenhead CCG	91	116	102	102	90	97	94	109	126	125	122	140	116
Wokingham CCG	172	172	145	172	155	163	171	168	244	248	212	212	157
Grand Total	2113	2351	2145	2350	2203	2159	2265	2265	2888	2879	2578	2682	2351

Proportion of GP triage attempts which were accepted - Data

CCG	Apr-17	May-17	Jun-17	Jul-17	Aug-17	Sep-17	Oct-17	Nov-17	Dec-17	Jan-18	Feb-18	Mar-18	Apr-18
Aylesbury Vale CCG	76	85	70	73	76	66	89	100	150	121	103	93	99
Bracknell and Ascot CCG	82	109	92	103	90	109	101	110	143	158	129	141	117
Chiltern CCG	169	194	190	191	167	162	161	181	216	263	239	219	229
Milton Keynes CCG	76	91	83	85	85	97	98	117	135	140	115	129	113
Newbury and District CCG	98	100	93	107	126	112	115	125	160	122	111	133	119
North & West Reading CCG	78	66	70	82	83	96	96	104	131	124	101	82	84
Oxfordshire CCG	432	450	396	457	441	417	497	491	594	634	574	597	477
Slough CCG	74	115	78	95	73	57	58	71	98	112	79	78	92
South Reading CCG	105	124	98	114	123	107	100	122	140	135	119	157	124
Windsor Ascot & Maidenhead CCG	67	88	79	80	63	70	59	78	85	89	89	92	84
Wokingham CCG	128	121	96	125	108	112	133	140	183	179	158	166	121
Grand Total	1385	1543	1345	1512	1435	1405	1507	1639	2035	2077	1817	1887	1659

SCAS GP triage - proportion of GP triage attempts which were accepted, TV/MK

CCG	Apr-17	May-17	Jun-17	Jul-17	Aug-17	Sep-17	Oct-17	Nov-17	Dec-17	Jan-18	Feb-18	Mar-18	Apr-18
Aylesbury Vale CCG	57%	56%	57%	54%	52%	55%	61%	61%	68%	64%	63%	58%	61%
Bracknell and Ascot CCG	67%	77%	69%	69%	74%	77%	66%	71%	76%	80%	73%	77%	73%
Chiltern CCG	69%	66%	67%	71%	63%	65%	62%	60%	68%	73%	74%	72%	72%
Milton Keynes CCG	44%	52%	47%	43%	50%	54%	47%	53%	57%	62%	61%	57%	59%
Newbury and District CCG	63%	64%	66%	68%	74%	69%	70%	68%	76%	76%	74%	75%	78%
North & West Reading CCG	68%	70%	72%	62%	69%	76%	82%	79%	76%	81%	72%	71%	73%
Oxfordshire CCG	65%	62%	57%	62%	63%	62%	70%	66%	69%	72%	71%	70%	69%
Slough CCG	75%	79%	71%	68%	74%	63%	59%	68%	77%	73%	64%	72%	71%
South Reading CCG	73%	72%	69%	72%	74%	71%	72%	76%	75%	72%	70%	75%	79%
Windsor Ascot & Maidenhead CCG	74%	76%	77%	78%	70%	72%	63%	72%	67%	71%	73%	66%	72%
Wokingham CCG	74%	70%	66%	73%	70%	69%	78%	83%	75%	72%	75%	78%	77%

If the paramedics were able to speak with a GP, **95%** of patients were treated on scene in Oxfordshire.

Positive outcomes:

- 1 Better pathway for patients – less disruption/anxiety etc
- 2 Decrease of conveyance = freed up ambulance resource
- 3 Reduced A&E attendance
- 4 Reduced emergency admissions

Key Actions

- Oxfordshire GP practices to continue focusing on GP Triage acceptance and sharing direct phone numbers.
- Practices to feedback their own challenges to provide feedback to CCG & SCAS
- SCAS to continue attending and have representation at Locality forum meetings to continue the collaborative partnership work.

Thank you

Any questions?